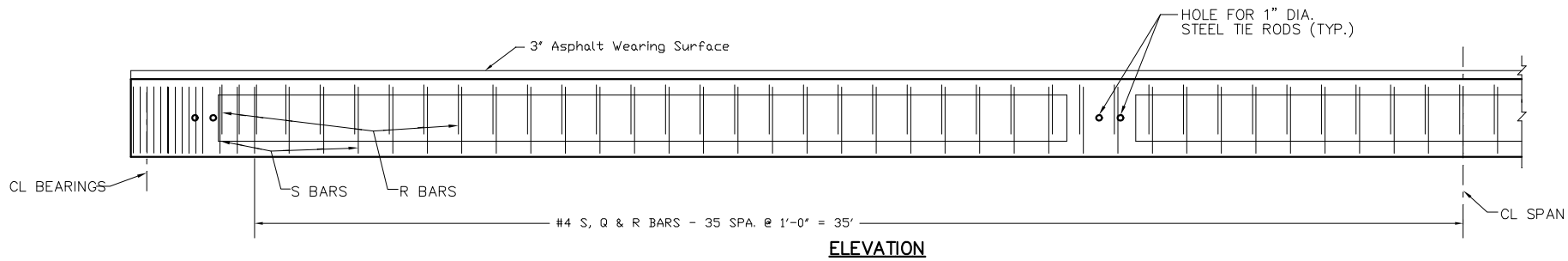
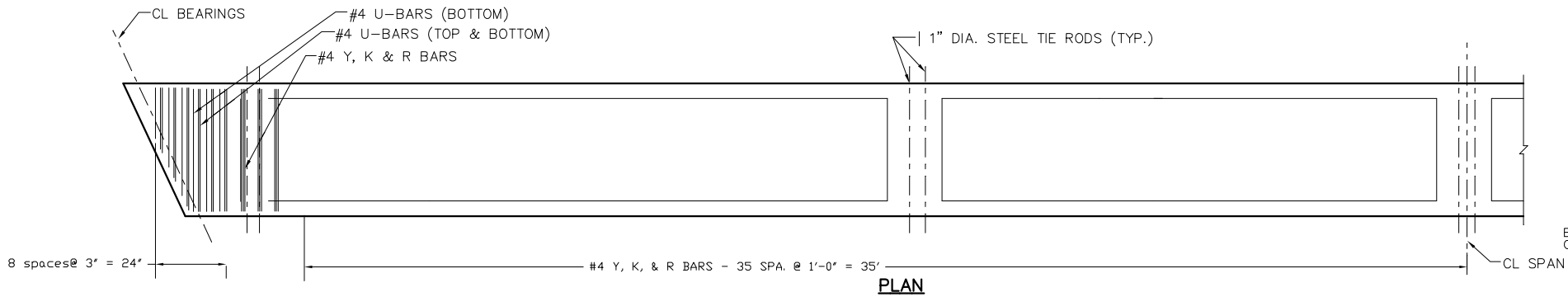
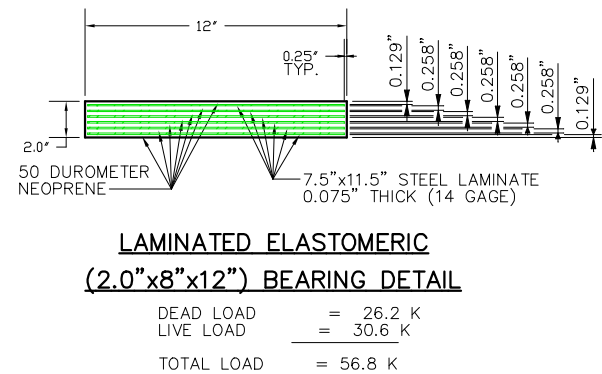
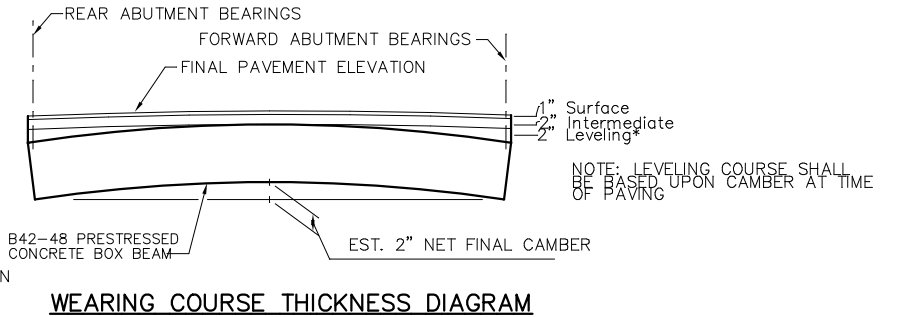
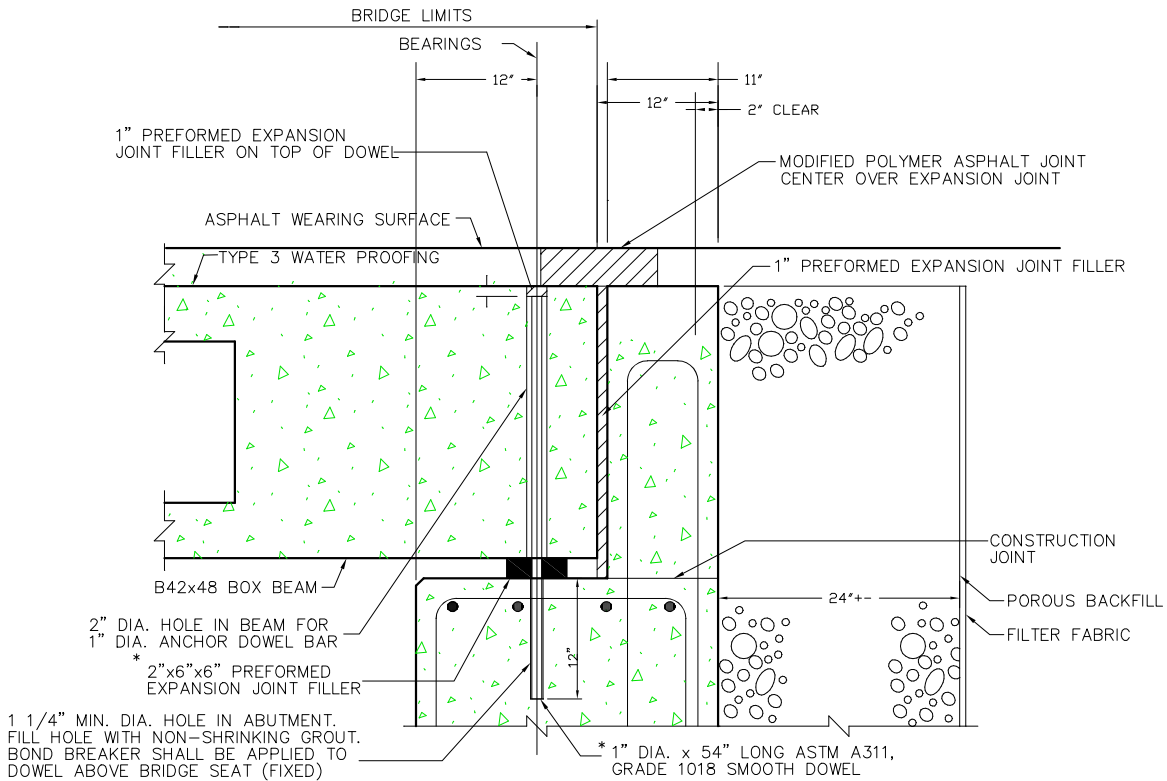


A:\Markdata\_files\Bridges\PA\TR58-2.98\TR58 dwgs\Actual\abut\_beam\_details.dwg



### B42-48 BOX BEAM DETAILS

NOTE: SEE STANDARD DRAWING PSBD-2-07 FOR REINFORCING BARS AND DETAILS NOT SHOWN.



ELASTOMERIC BEARINGS:  
THE ELASTOMER SHALL HAVE A HARDNESS OF 50 DUROMETER. THE BEARINGS WERE DESIGNED IN ACCORDANCE WITH SECTION 14.7.6 (METHOD A) OF THE AASHTO LRFD BRIDGE DESIGN SPECIFICATIONS. THE LONG-TERM COMPRESSION PROOF LOAD TEST (AASHTO STANDARD SPECIFICATIONS FOR HIGHWAY BRIDGES, DIVISION II, SECTION 18.7.2.6) IS NOT REQUIRED.

NOTES  
CALCULATED CAMBER:  
CALCULATED CAMBER AT THE TIME OF RELEASE IS 1.5 INCHES. CALCULATED CAMBER AT TIME OF PAVING IS 3 INCHES. LONG TERM CAMBER IS 4 INCHES. CALCULATED DEFLECTION DUE TO DEAD LOAD APPLIED AFTER THE BEAMS ARE SET (WEIGHT OF SURFACE COURSE, RAILINGS) IS 1.5 INCHES.

